

# Gardening tips

Encircle  
HOUSING

## Your outdoor space



As your landlord we are responsible for maintaining the pathways, steps and access to your garden, boundary fences and walls.



This often extends to maintaining the grounds, which will be shown in your rent and service charge schedule.



If your rent includes grounds maintenance, then we will arrange for your garden to be cut back and maintained as part of our cyclical works programme.

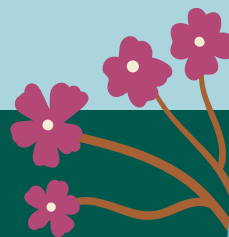


All we ask as part of your tenancy agreement is that you help to look after your garden space, it is your home, and we want you to enjoy the benefits of your outdoor space.

## About this leaflet



This leaflet gives you general gardening tips and how to sow seeds outdoors and brighten up your patio with pots.



## Before planting



Do not plant too early in the season. Make sure the last frost has gone.



Know how much sunlight your plants will need before you plant them. You can check the advice on the label.

## Sowing seeds outdoors



### Step 1

Make a shallow groove or also known as a drill in soil using the end of a trowel. Read the instructions on the seed packet as there may be more advice.

### Step 2

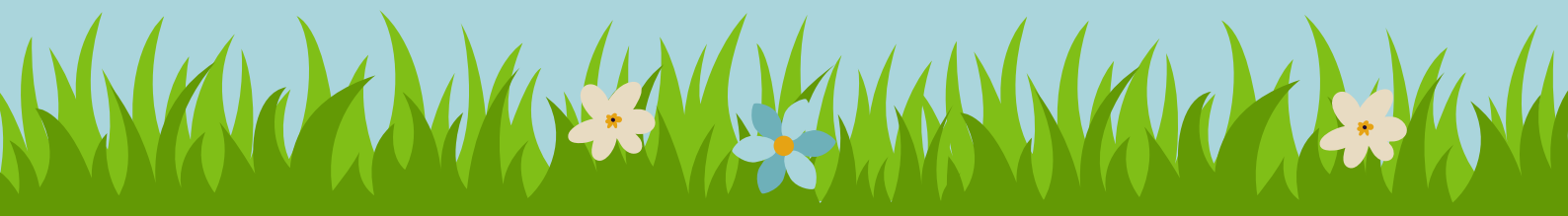
Sow seeds along the groove at the space suggested on the seed packet.

### Step 3

Push soil in from either side of the drill to cover over the seed. Gently pat the surface of the soil to keep the seeds in place.

### Step 4

Dribble water along the drill using a watering can or hose to settle the soil. Keep soil moist as seed germinates and establish.



## Planting bulbs



Plant spring-blooming bulbs in the autumn before the ground freezes. In general, place the bulb in a hole that's two to three times the depth of the bulb.

## Plants in containers



### Step 1

If using a plant pot or container with a large drainage hole, place a few stones over it to stop the compost washing out. For other plant pots or containers there is no need to add stones or gravel at the bottom.

### Step 2

Fill the container with compost, leaving room to arrange the plants on the surface.



### Step 3

Carefully remove the plants from their pots. Ensure that the top of the rootball is level with the surface of the compost.

### Step 4

Firm the compost around the plants. Make sure there is about an inch between the soil level and the top of the container so there is space for water to soak in. Water well.



## Watering plants



Plants need to be watered at the roots. One of the best ways to do this is to use a trowel to move a small amount of soil away from the bottom of the plant so it leaves a small dish for the water to go into.



Pour a few inches of water in it. It might take a little while for the water to go down, and when it does, it will go straight to the roots. Water your plants in the early evening as there is less chance the water will evaporate.



## Weeding

Hand-weeding and hoeing are two of the best ways to control weeds in the garden. Avoid deep hoeing or cultivating as this can bring weed seeds to the soil's surface so they germinate. Weed often to prevent weeds from going to seed. You can use mulch to smother and prevent annual weeds.



## Pruning

Prune spring-flowering shrubs immediately after the blooms fade. They set their flower buds in autumn on last year's growth. If you prune them in autumn or winter, this will remove next spring's flower buds.

## Deadhead

Remove spent flowers so the plant sends energy to the bulbs instead of making seeds. Leave the foliage until it turns brown and can be removed with a gentle tug.





## CONTACT US

### GENERAL ENQUIRIES

0330 390 0517

[contactus@encircleha.co.uk](mailto:contactus@encircleha.co.uk)

### REPAIRS

0330 094 0142

[repairs@encircleha.co.uk](mailto:repairs@encircleha.co.uk)

2 High Street House, High Street, Yeadon,  
Leeds, LS19 7PP

Registered Provider of Social Housing number 4784  
and Co-operative and Community Benefit Society  
Financial Conduct Authority Number 8071. Encircle  
Housing has charitable rules.